

SANS 10400:
Structural design
The structural system of the building need to comply with the requirements of parts H, J, K, L, M or N of SANS 10400, as in the case of timber buildings with the requirements of SANS 10082

Site operations
The provision of sanitary facilities is in accordance with the detailed requirements of SANS 10400-F

Excavations
The excavation relating to a building is less than 5.0 m deep and is in accordance with the detailed requirements of SANS 10400-G

Foundations
The foundations for the building are in accordance with SANS 10400-B

Floors
Floors in any laundry, kitchen, shower room, bathroom or room containing a toilet pan or urinal are in accordance with the detailed requirements of SANS 10400-J

Walls
The structural strength and stability of a wall is in accordance with SANS 10400-B and SANS 10400-T

Roofs
The roof assembly and any ceiling assembly, in addition to complying with the requirements of SANS 10400-C, are in accordance with the detailed requirements of SANS 10400-L and the roof assembly is supported on walls that comply with the requirements of SANS 10400-K
- Gutters and downpipes, if any, are sized in accordance with the requirements of SANS 10400-R
- The fire resistance and combustibility of the roof assembly or any ceiling assembly are in accordance with the detailed requirements of SANS 10400-L & SANS 10400-T

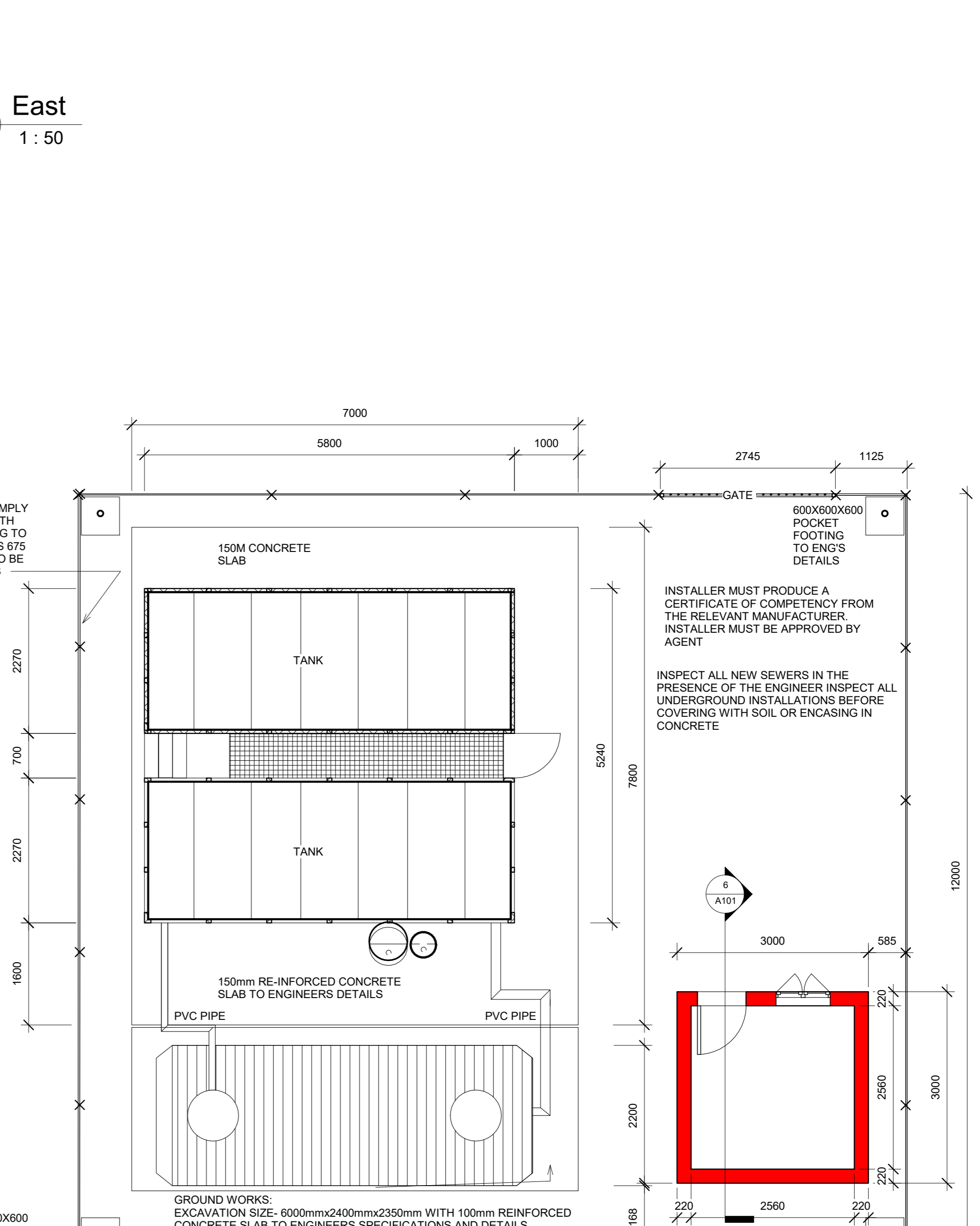
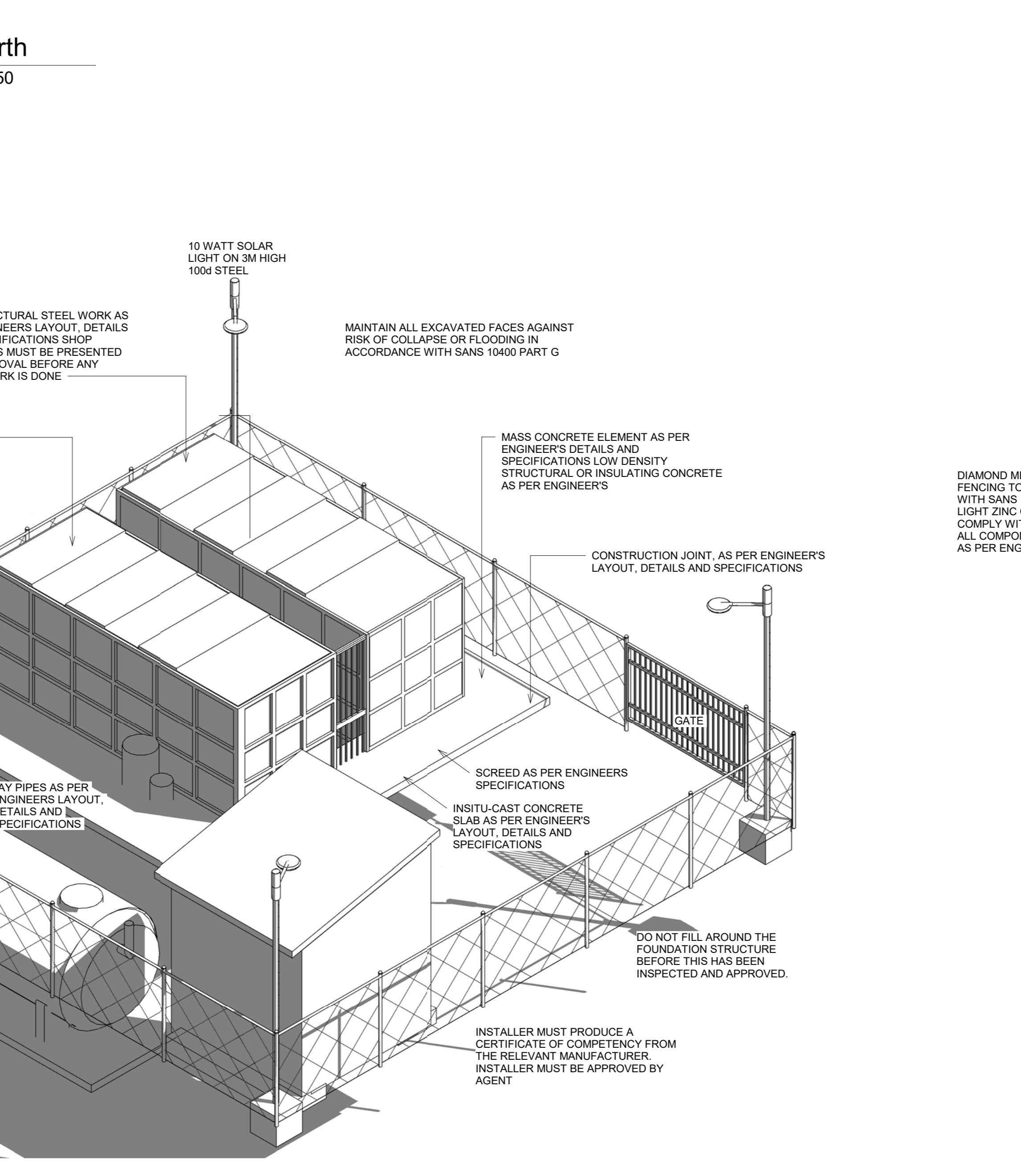
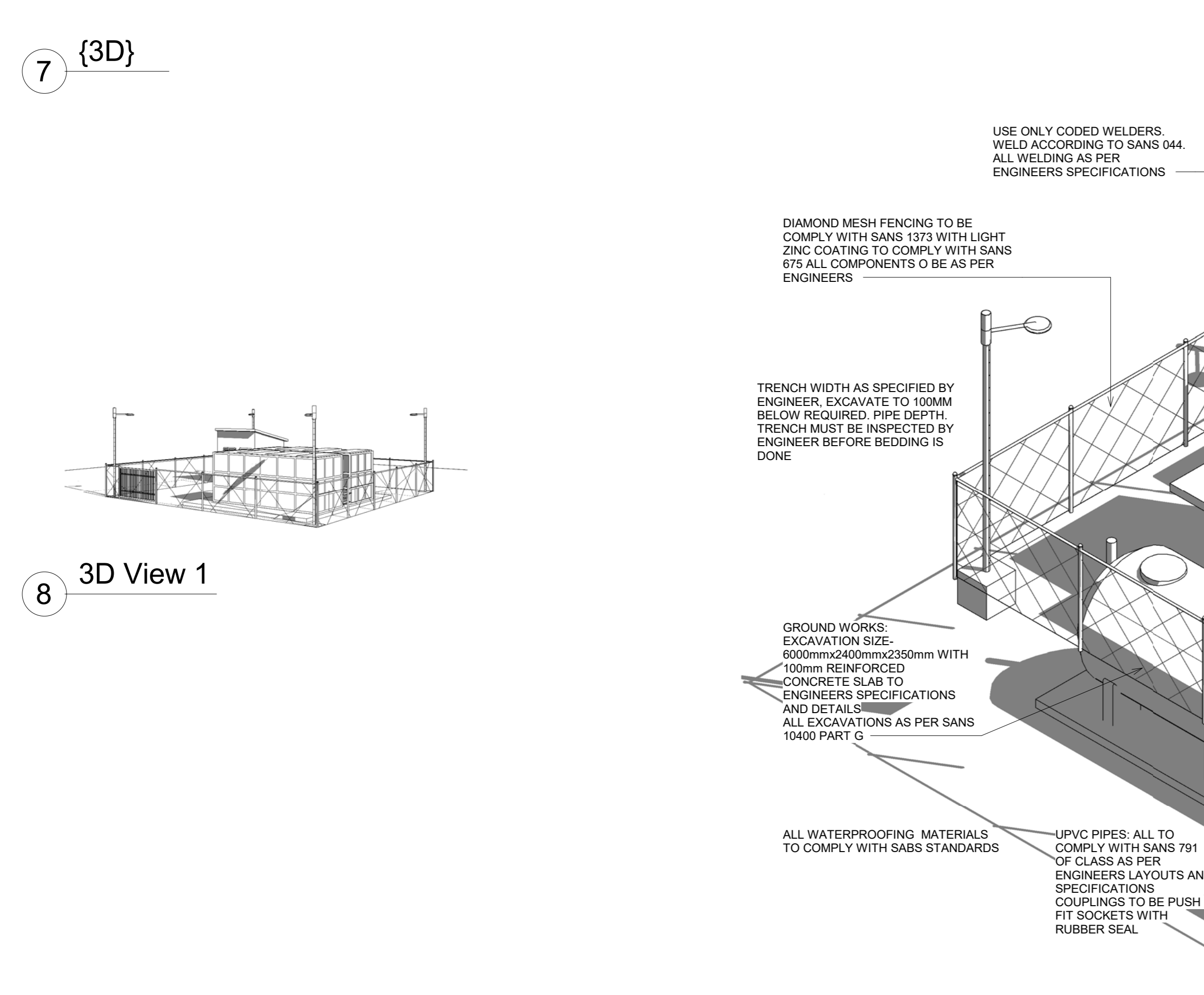
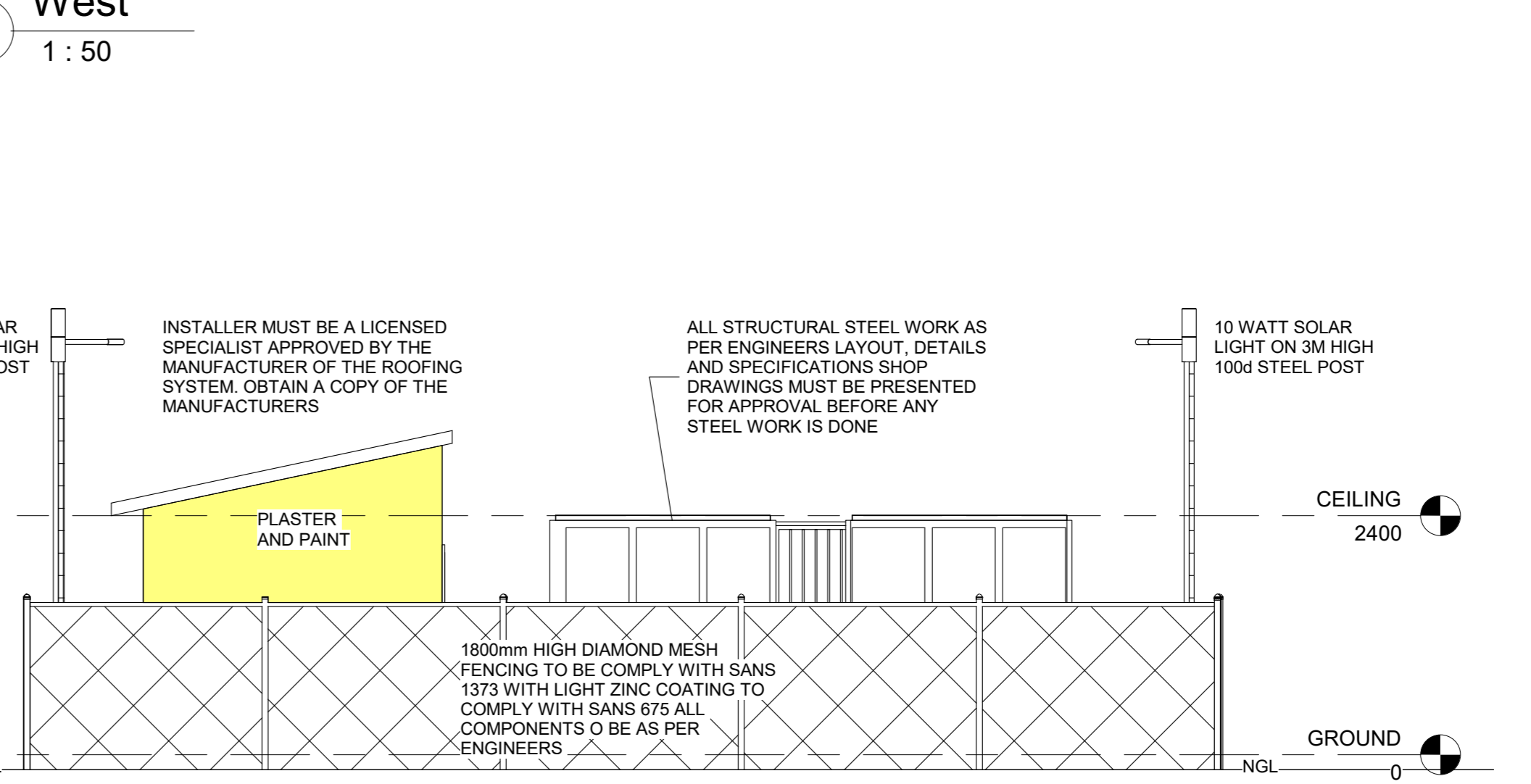
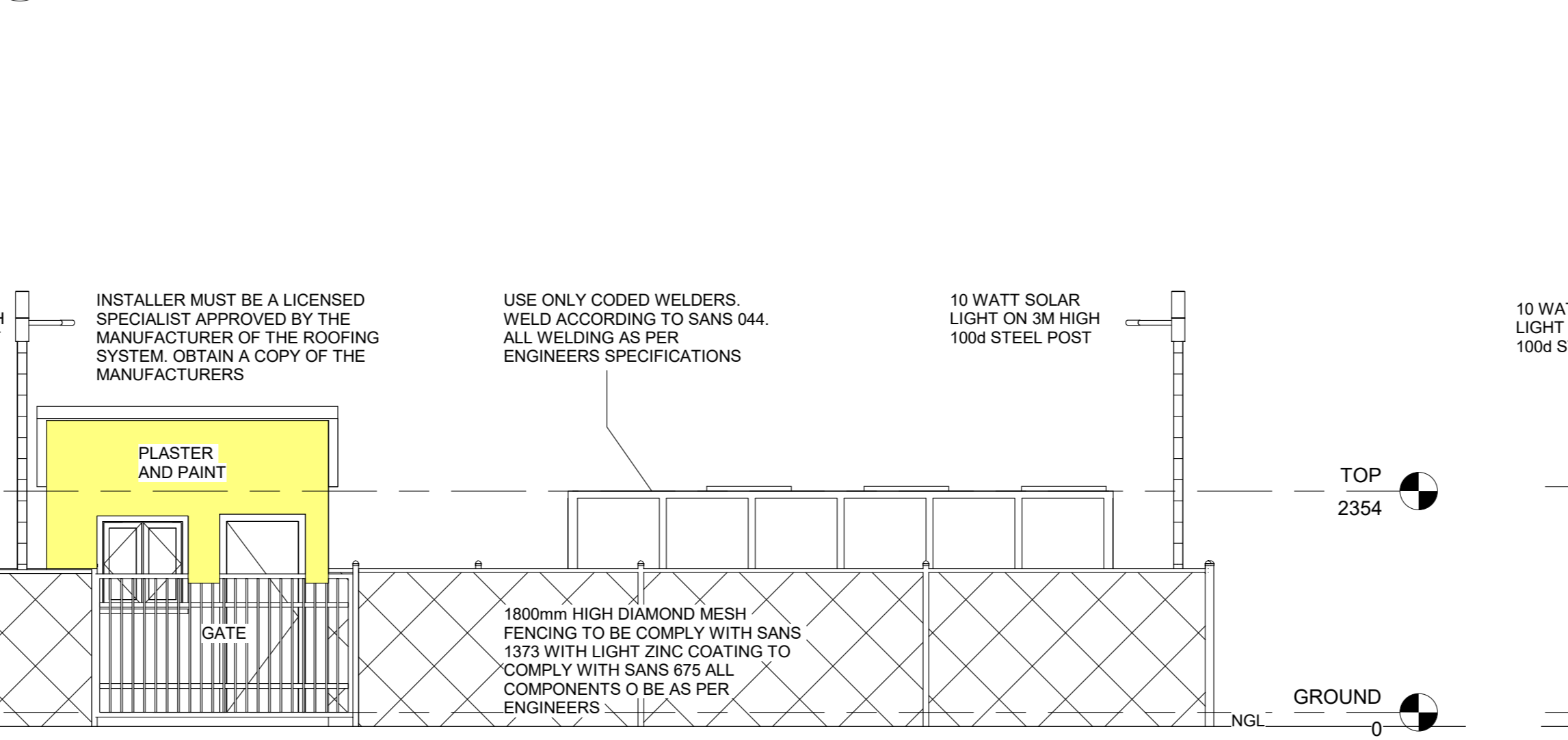
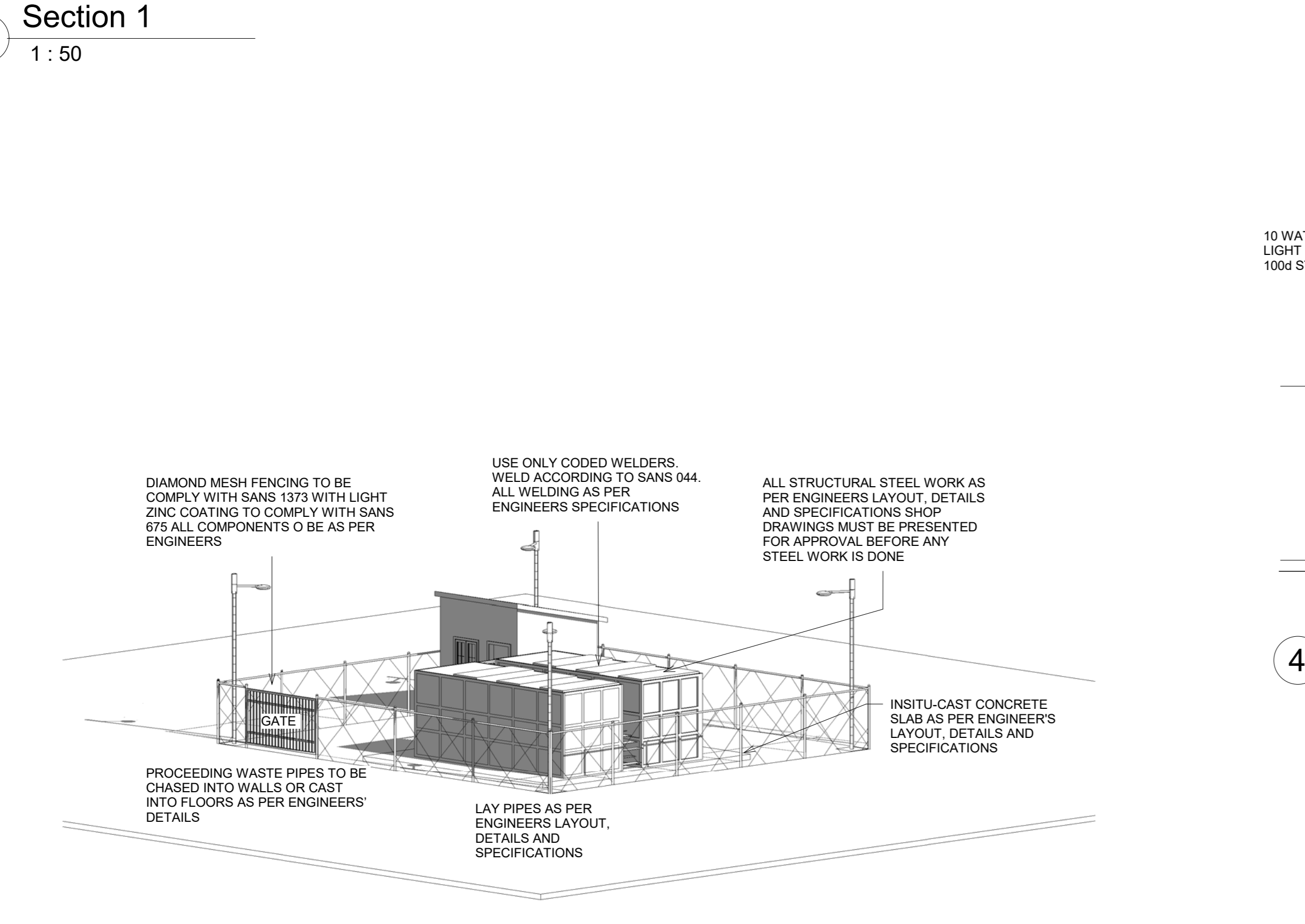
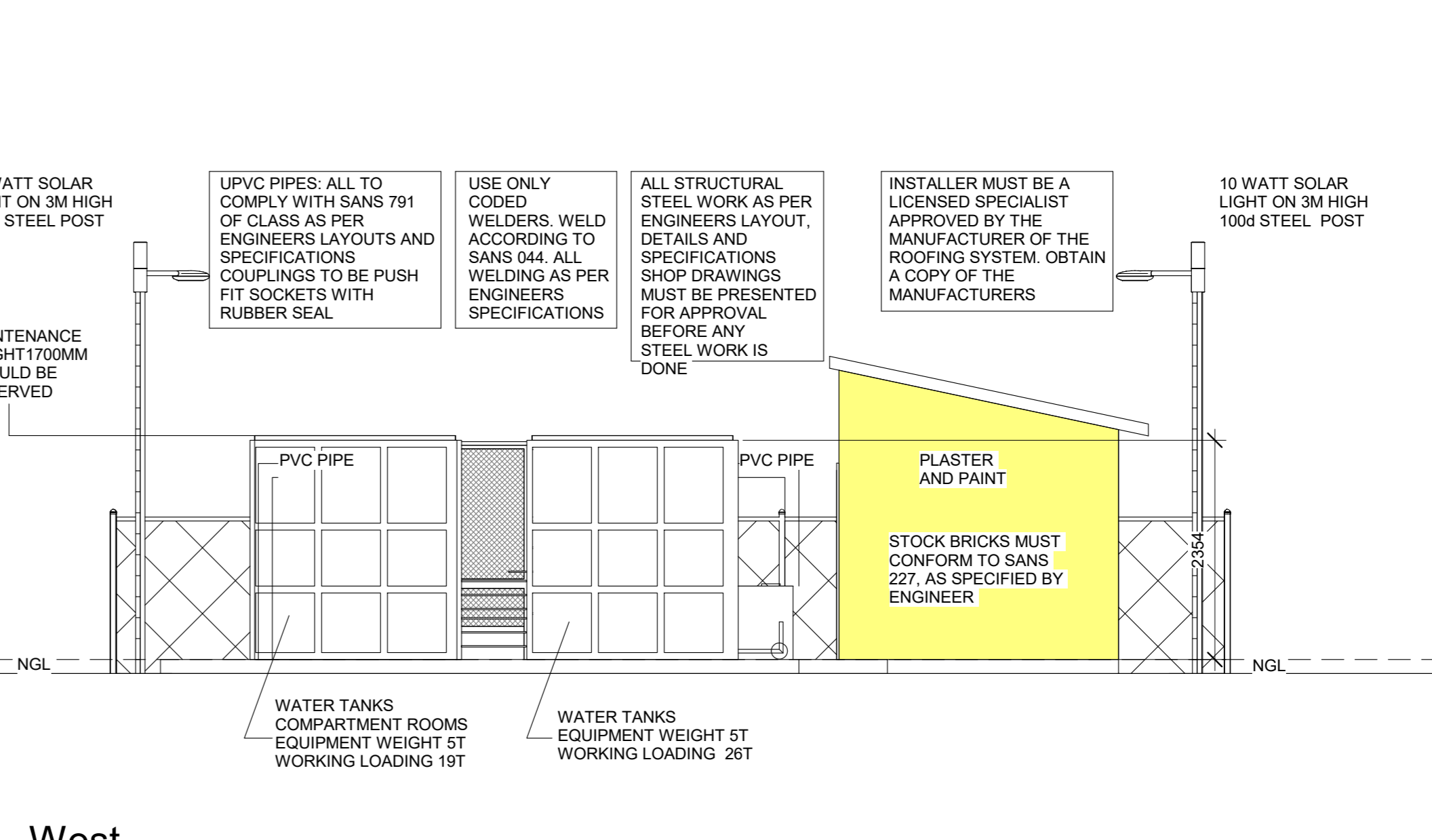
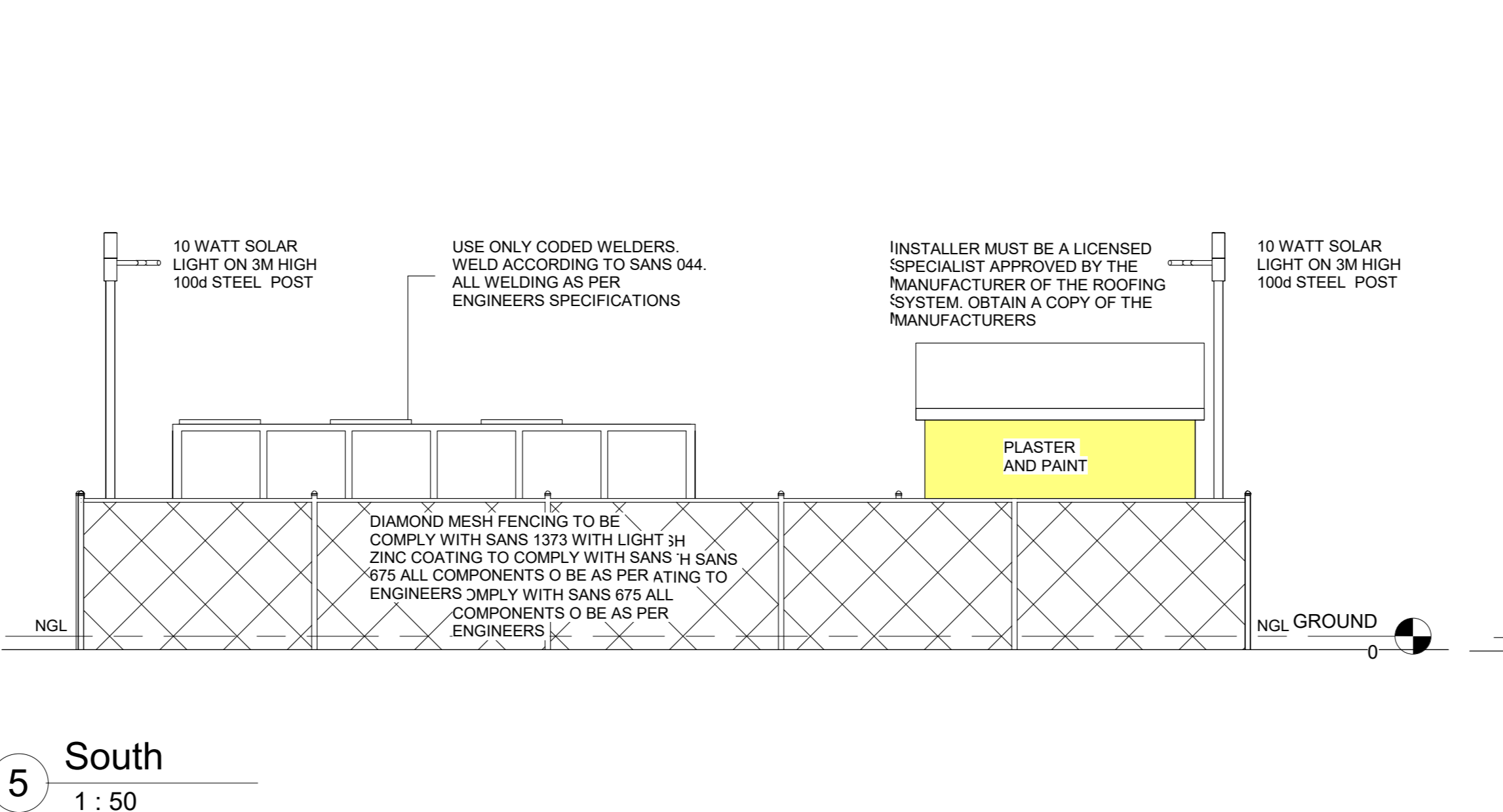
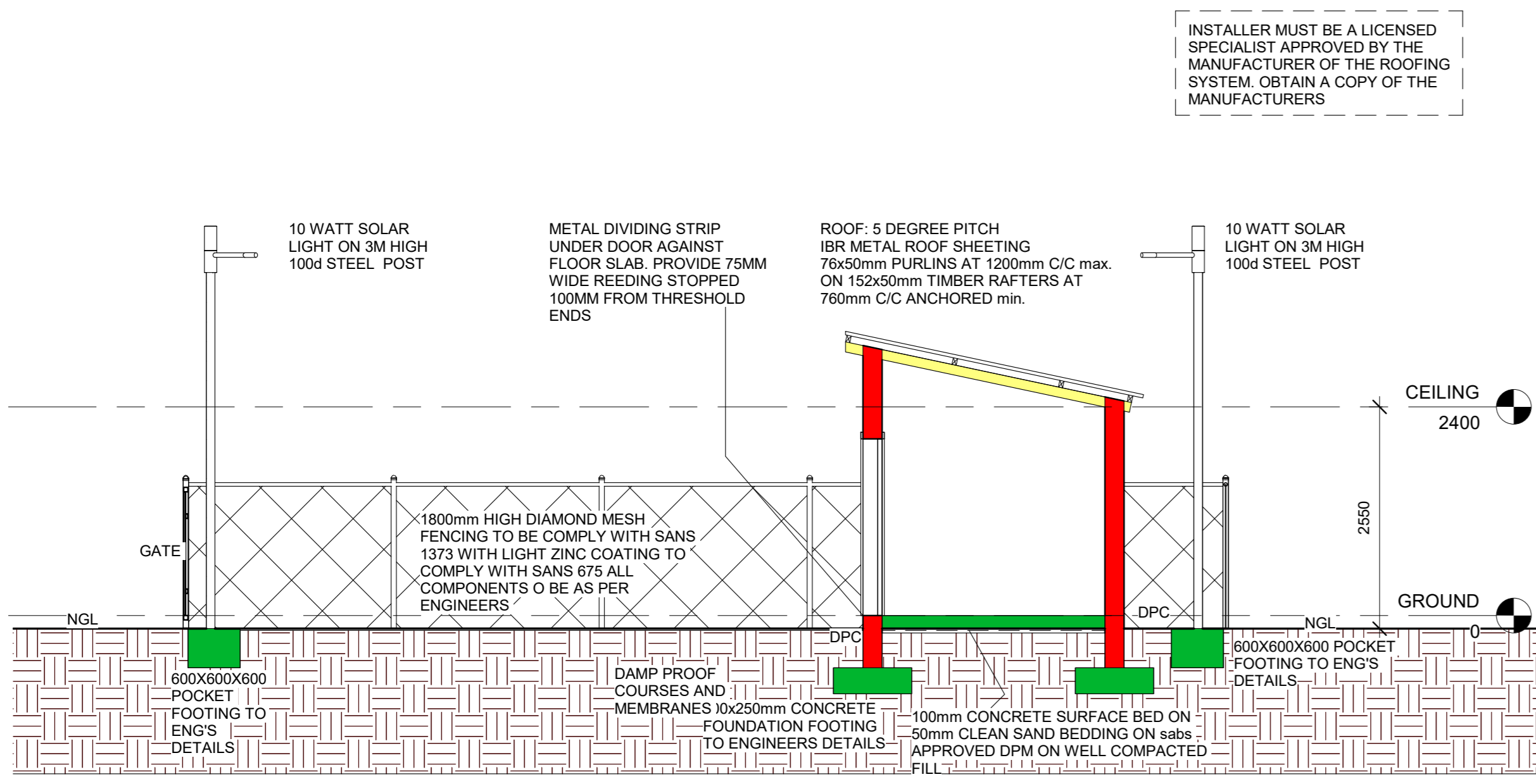
Glazing
The type and fixing of glazing is in accordance with SANS 10400-B

Lighting and ventilation
The lighting in a habitable room, bathroom, shower room and room containing a toilet pan complies with the requirements of SANS 10400-T and the detailed requirements of SANS 10400-Q

Drainage
The design of the drainage system is in accordance with the detailed requirements of SANS 10400-P

Stormwater disposal
The means for the control and disposal of stormwater is in accordance with the detailed requirements of SANS 10400-R

Water Tanks
Water tanks must be constructed in accordance with SANS 10400-E



No.	Description	Date

CLEAR ENVIRO-LOO

LAYOUT DRAWINGS

COPY RIGHT ENVIRO OPTIONS

Project number **21-014**

Date **05-05-2021**

Checked by **D SMITH**

A101

Scale **1 : 50**

PROFESSIONAL ARCHITECT
DENVER SHAUN SMITH

22 of 78 (2014-02-27) 10:03 AM